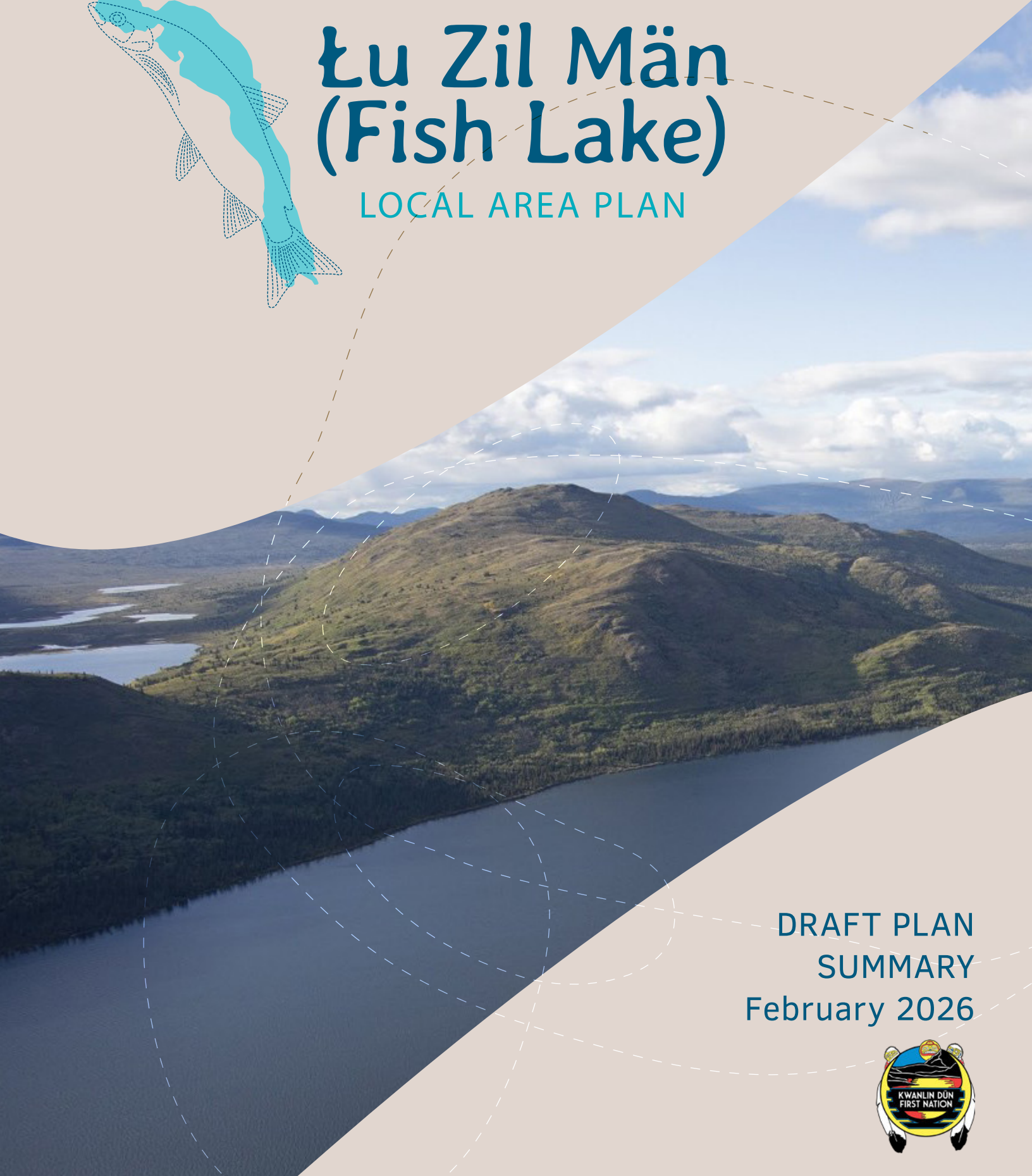


Łu Zil Män (Fish Lake)

LOCAL AREA PLAN



DRAFT PLAN
SUMMARY
February 2026



VISION, VALUES, AND GUIDING PRINCIPLES

VISION FOR THE FUTURE:

The Łu Zil Män (Fish Lake) plan area continues to be a thriving and long occupied landscape with space to wander and views that take your breath away. Whether Yukon First Nations peoples, residents, or visitors, we are all guests in this place where we gather, harvest, and live. Respect and stewardship are displayed through the thoughtful actions of all who come here, and we collectively foster healthy relationships with one another and the lands and waters.

Our intention is to protect and honour this remarkable place and our ancient connections to it by keeping it in a natural state.

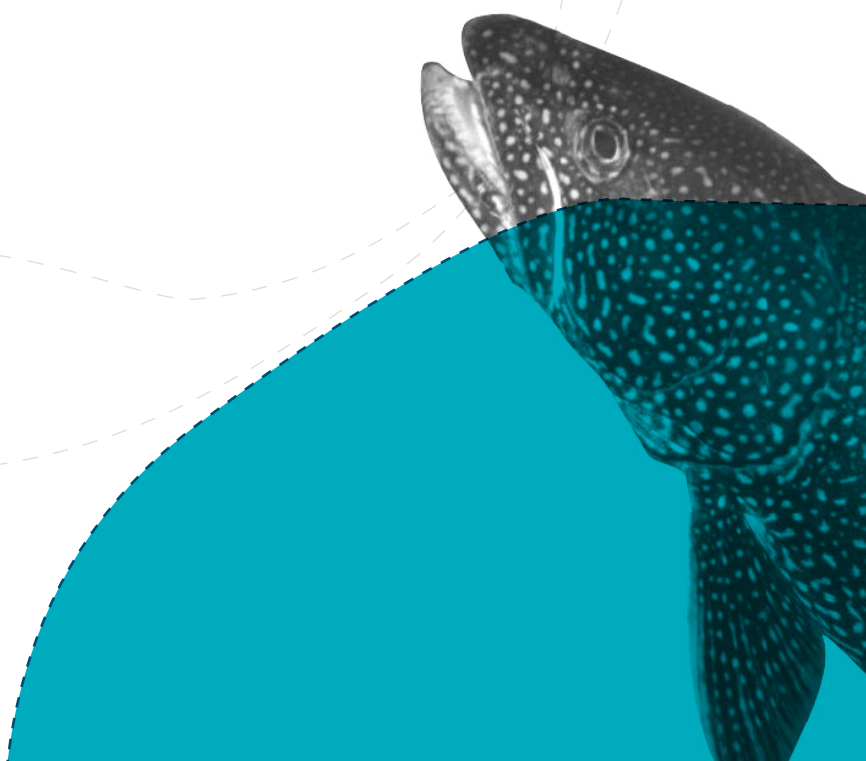
COMMUNITY VALUES

1. A natural environment with clean water, healthy fish and wildlife, and intact habitats;
2. That many generations of Yukon First Nations peoples have used, and continue to use, the Łu Zil Män area as a home and place of harvest, gathering and celebration;
3. The experiences and adventures that the land and water have to offer;
4. Scenic views of landscapes that remain much the same as what ancient people would have seen;
5. The ability to respectfully and sustainably harvest and gather from the Fish Lake area;
6. A sense of place to connect with ourselves, friends and family, and nature;
7. Sharing Yukon First Nations culture between communities and across generations;
8. The opportunity to live and be self-sufficient in a quiet rural setting with close ties to neighbours and the land;
9. The richness of heritage and heritage resources, whether artifacts, places, knowledge, memories, stories, or other; and
10. Sharing this place in a respectful way that doesn't create significant environmental impacts.



GUIDING PRINCIPLES

- 1. Implementation of Final Agreements** – The Final and Self-Government Agreements are respected and understood not only as a legal obligation, but as a foundation for opportunity for all Yukoners.
- 2. Sensitivity to Place** – The unique characteristics of the Fish Lake area as a near-urban rural wilderness area with high visitation are recognized, and decisions must satisfactorily answer the question, “Does it make sense here?”
- 3. Two Ways of Knowing** – Yukon First Nation ways of knowing and what is broadly referred to as “Western” science both contribute to a richer understanding of the world and the resolution of planning issues.
- 4. High Stakes Mean Hard Choices** – Accommodating all needs and interests is a possibility to consider, not an inevitable outcome. The significance and vulnerability of this place demand the courage to make hard choices where needed.
- 5. Nature Comes First** – The health of ecological systems is prioritized, and the natural laws that govern the relationship between the land, water, and animals are followed.
- 6. Recognition of Inter-relationships** – Broader regional ecological connectivity is recognized and impacts both from and on places outside of the planning boundaries are considered.
- 7. Keep a Light Touch** – Development of any public infrastructure, spaces or amenities should be low impact and created with sensitivity to place and aesthetics.
- 8. We Are All Part of the Solution** – Promoting personal and collective responsibility for minimizing negative environmental or other impacts is a cornerstone of decision-making and action.
- 9. Collaboration and Cooperation** – Planning, implementation and decision-making should promote cooperation between people and governments.
- 10. Protection of Subsistence Rights** – The subsistence rights of Kwanlin Dün First Nation beneficiaries to hunt, fish, and pick berries and other medicines will be upheld.
- 11. Considering Those Who Come Before and After Us** – All land use and decision-making must consider the area’s millennia-long human occupation and the ability of future generations to benefit from the land.
- 12. Reconnection and Reconciliation** – The planning process is recognized as an opportunity to take action towards reconciliation and seek support for decisions that foster reconnection of Yukon First Nations peoples with the Fish Lake area.



KEY POLICIES & ACTIONS

The Łu Zil Män Local Area Plan contains 66 policies and 52 actions. The list below contains some of the key ones, organized around five overarching themes:

PROTECTION

- » Protect Fish Lake’s wilderness
- » Limit new residential or commercial development
- » Keep Fish Lake “off-grid”, with basic road access
- » Protect the quiet, self-sufficient rural lifestyle of residents in the area

RECONNECTION

- » Develop KDFN residential and community infrastructure on Settlement Land in alignment with KDFN’s Traditional Territory Land Vision
- » Support KDFN traditional activities over recreation and/or tourism uses where there are conflicts
- » Support KDFN Citizens and Beneficiaries to practice, showcase and celebrate KDFN culture
- » Undertake a heritage management plan to preserve cultural and heritage resources
- » Incorporate First Nation language and placenames wherever possible

RESPECTFUL USE

- » Designate and improve trails and parking areas to facilitate high quality recreation and tourism experiences
- » Consider small-scale visitor facilities at Fish Lake, Jackson Lake and Fish Lake/Bonneville Lakes trailhead
- » Explore improvements to better monitor, identify and mitigate environmental impacts from tourism/visitor use and visitation

STEWARDSHIP & EDUCATION

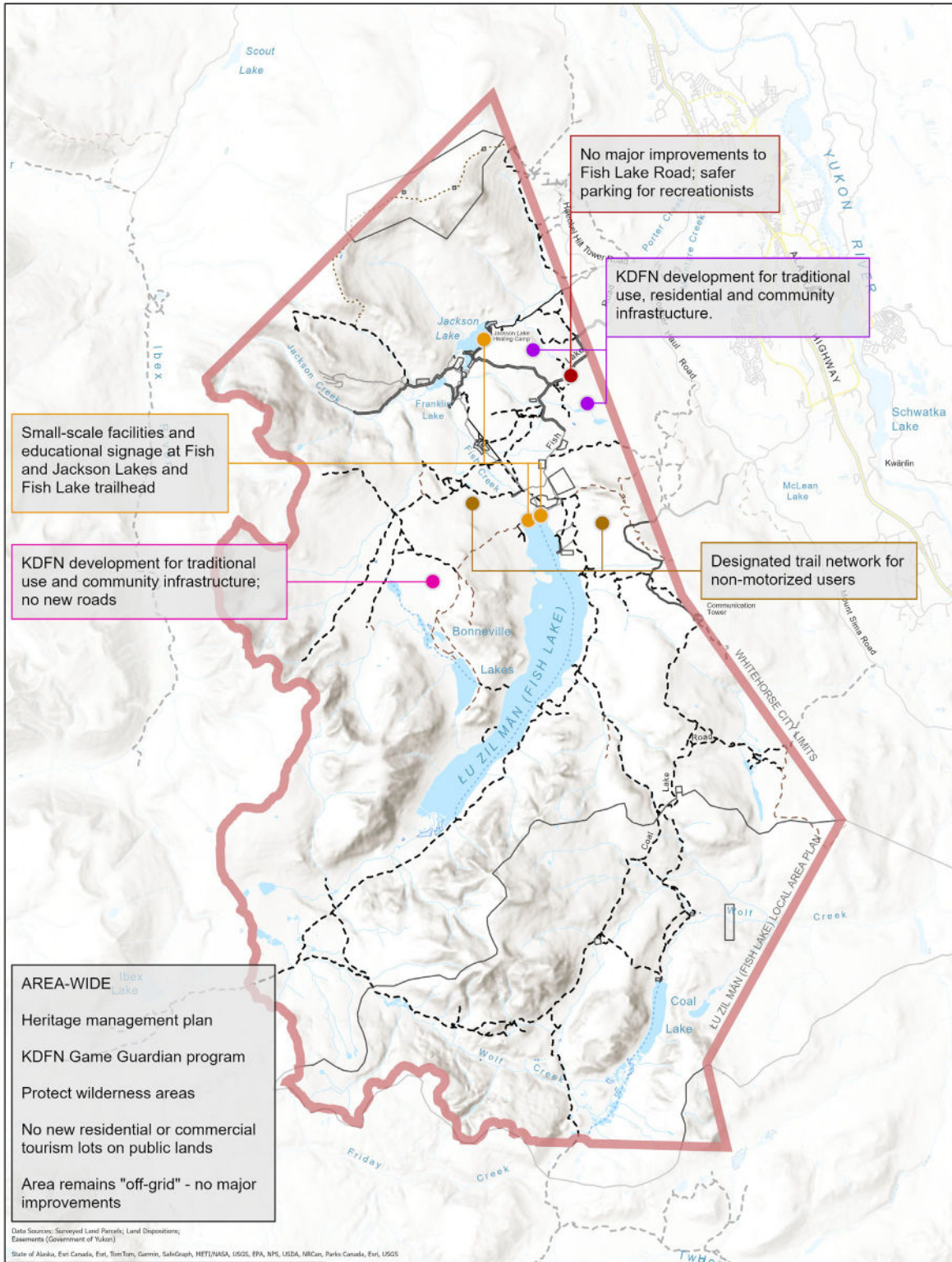
- » Establish a KDFN Guardian program to educate visitors and monitor wildlife, habitat, and impacts from recreation and tourism
- » Establish a KDFN Freshwater Fish Monitoring Program in the area
- » Educate visitors to minimize their impacts

COORDINATION AND COLLABORATION

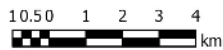
- » Work with Governments of Yukon and Canada to implement the Plan
- » Explore options for a community-based group that can oversee Plan implementation
- » Encourage ongoing community involvement and government accountability

“I’ve seen a lot of changes to our land, to the people that come there today, to what it was when I was growing up when nobody was around except for the Native people that camped and hunted and fished in the area. Today it’s totally different. Like, there are so many people, you can’t even find a parking space on the weekends. People are ice fishing and doing whatever. That’s why I really think we need stuff to be put up out there; but in the long run, because I have my ties to Fish Lake to my family’s history, it’s been handed down to the family.”

~ Irma Scarff
KDFN Elder



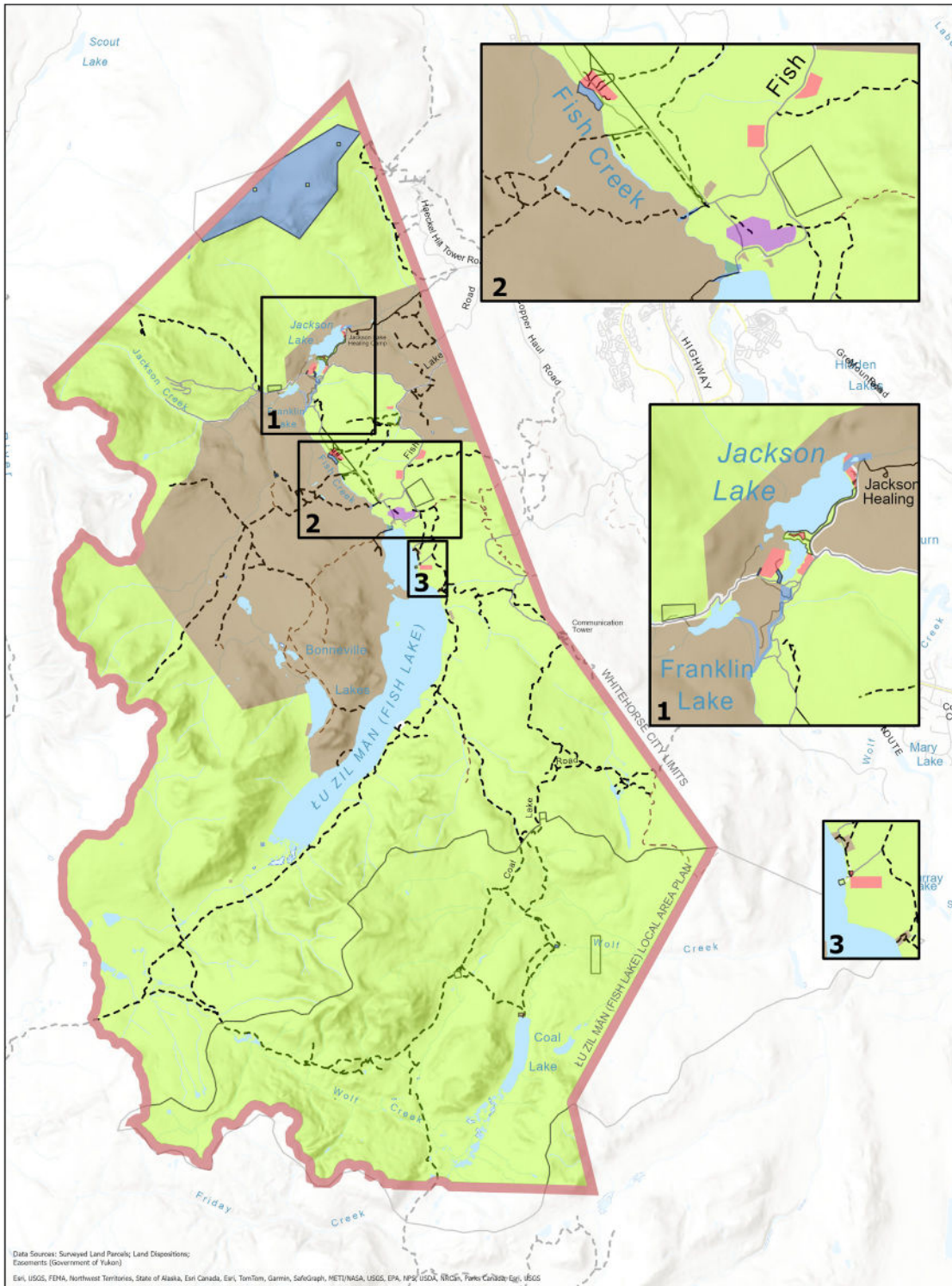
Policy & Action Highlights Map



LAND USE DESIGNATIONS

The Plan spatially organizes the different parts of the planning area into five land use designations, as shown on the maps on the following pages. The Plan provides guidance on what uses are supported within each designation and policies (or rules) that should apply to those uses.

DESIGNATION	APPLIES TO	PERMITTED LAND USES	KEY POLICIES
Commercial Tourism	Existing commercial tourism property	<ul style="list-style-type: none"> » Commercial tourism facilities » Community and cultural gathering 	<ul style="list-style-type: none"> » Lot subdivision is not supported » Impacts of commercial tourism uses on community values should be minimized » Expansion to accommodations should be limited
Rural Residential	Existing rural residential properties	Residential dwellings	<ul style="list-style-type: none"> » Secondary dwellings are supported » Lot subdivision is not supported » Rezoning for commercial use is not supported » Home-based businesses are supported » Tourism/guiding businesses may be supported depending on impacts
First Nation Land Use	KDFN Settlement Lands	<ul style="list-style-type: none"> » KDFN residences » KDFN community infrastructure » KDFN camps and cabins for traditional activities » Visitor facilities 	<ul style="list-style-type: none"> » Residential and traditional use allocations are limited to historical land submissions » New roads are not allowed on R-4A » Impacts of new dwellings on wildlife, habitat and subsistence should be minimized » Leasing of land to third parties for revenue generation is not allowed » Home-based businesses are allowed/ limited as per Rural Residential designation
Infrastructure	ATCO Electric Yukon land parcels and wind energy reserve	<ul style="list-style-type: none"> » Hydroelectric facilities » Wind power infrastructure » Visitor facilities 	<ul style="list-style-type: none"> » Expansion of existing hydro infrastructure is not supported; maintenance is » Wind development may be supported subject to mitigation of impacts » Visitor facilities should be small-scale
Natural Environment	Vacant public lands and select resource interests	<ul style="list-style-type: none"> » Traditional uses and recreation/tourism » Exercising of pre-existing resource interests » Visitor facilities » Other lawful activities consistent with Plan 	<ul style="list-style-type: none"> » Issuance of new non-renewable resource interests is not supported » Disposition of “legacy” vacant surveyed lots will be opposed » Existing resource areas should be phased out and rewilded to extent possible » KDFN traplines and related activities are supported » Grazing interests should be re-examined in the future



Data Sources: Surveyed Land Parcels; Land Dispositions; Easements (Government of Yukon); Esri, USGS, FEMA, Northwest Territories, State of Alaska, Esri Canada, Esri, TomTom, Garmin, SafeGraph, METI/NASA, USGS, EPA, NPS, USDA, iRICs, Parks Canada, Esri, USGS

- | | | |
|---|--|---|
| <ul style="list-style-type: none"> — Fish Lake Area Plan Boundary Parcel Boundaries — Major Roads — Minor Roads — Watercourse Waterbody, intermittent | <p>LAND USE DESIGNATIONS</p> <ul style="list-style-type: none"> Commercial Tourism First Nation Land Use Natural Environment Rural Residential Utility | <p>TRAILS & ROUTES</p> <ul style="list-style-type: none"> — Access road — 4WD road - - ATV trail (double track) - - Trail (single track) |
|---|--|---|

Summary Land Use Map

