

## HERITAGE, LANDS & RESOURCES

# SUMMARY OF THE KDFN TRADITIONAL TERRITORY LAND VISION



The Land Vision guides all land-use planning and land and resource decision-making in KDFN Traditional Territory.

The Land Vision is based on community values and principles.

KDFN approved the Land Vision in 2017 after extensive community engagement with 150 Citizens and Beneficiaries.



## VALUES

Well-being of the Land  
Well-being of the People

## GUIDING PRINCIPLES



Respect



Caring for the Land



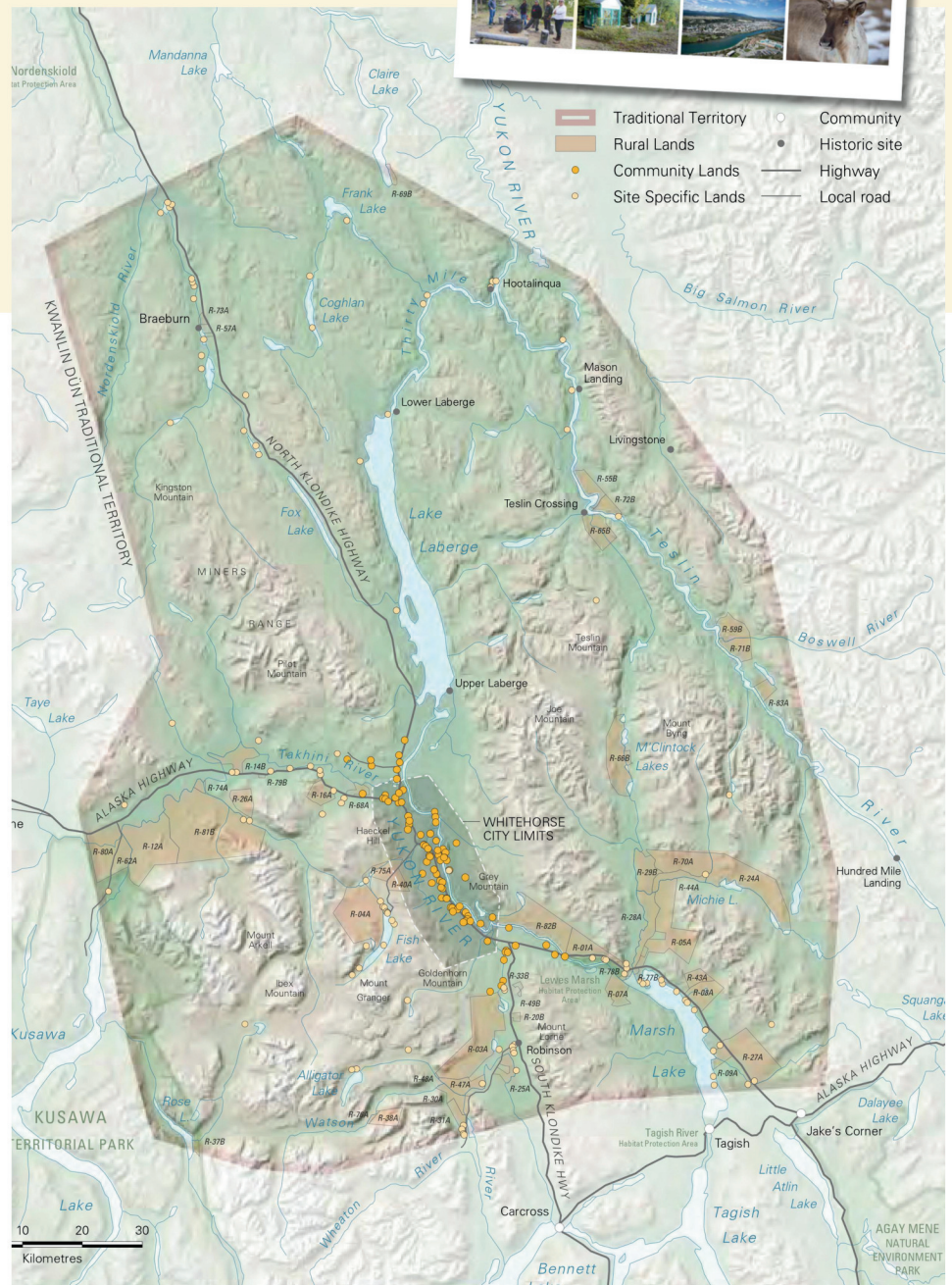
Considering Future Generations



Cooperation



Community



## GOALS & DIRECTION

1

**Community Development:** Provide land for KDFN residential and infrastructure needs.

### Residential use by KDFN Citizens

In addition to McIntyre Subdivision and Crow & Swan neighbourhood, the Land Vision identifies several parcels within and outside of Whitehorse that could be for residential use by Citizens. A few parcels could be developed in the short-term, and the rest could be left for future use.

### KDFN Infrastructure

KDFN government buildings should be mainly located in McIntyre Subdivision. The Land Vision identifies 15 parcels outside of Whitehorse where other developments could occur, such as general assembly sites, culture camps, and campgrounds.

2

**Wildlife:** Conserve areas of high ecological value and maintain the health of wildlife populations.

This is especially important in remote areas without road access, such as the west side of Marsh Lake, Lake Laberge, the M'Clintock Watershed, and the northwest and eastern portions of the Traditional Territory.

3

**Heritage:** Conserve areas of high heritage value and maintain and create opportunities for continued traditional use of the land.

KDFN lands outside Whitehorse not designated for community development should be managed primarily for heritage. Opportunities for a range of traditional activities should be provided, including areas close to Whitehorse with road access (Fish Lake, Watson River), and more remote, backcountry areas (M'Clintock Watershed, Teslin River, Lake Laberge, Marsh Lake, Lewes Marsh).

4

**Revenue Generation:** Make land available to generate revenue for the benefit of the KDFN community.

KDFN lands in Whitehorse not designated for community development should be available for revenue generation and economic development. This could include residential, commercial and light industrial uses. Development on KDFN land outside of Whitehorse may be considered in areas with existing road access.

Find the full Traditional Territory Land Vision at [kwanlindun.com/land-vision](http://kwanlindun.com/land-vision)

Physical copies are available through Heritage, Lands and Resources.

**CONTACT** Heritage, Lands and Resources, Kwanlin Dün First Nation

35 McIntyre Drive, Whitehorse

867-633-7800 ext. 128

